



## District 10 Code Analysis - FY18

Data extracted for Code cases opened between October 1, 2017 - Sept 30, 2018

### All Cases

Reported Complaint Type	Total	Commercial	Neighborhood	Multifamily
Land Use	784	93	657	34
Property Abatement	695	54	618	23
Structure Condition	660	278	239	143
Work Without Permit	106	6	97	3
SWS Chp 15	3	-	3	-
<b>Total</b>	<b>2,248</b>	<b>431</b>	<b>1,614</b>	<b>203</b>
<b>Total Percent of Citywide Complaints</b>	<b>7.0%</b>	<b>5.9%</b>	<b>9.0%</b>	<b>2.9%</b>

### Repeat Offenders, Short Term Rentals, and Rooming and Boarding Homes

\*Filtering cases by complaints occurring at Repeat Offender Properties (ROP), Short Term Rentals (STR), or Rooming and Boarding Homes (RBH). Austin Code categorizes them as Operating Licenses types.

Case Code	Total	Commercial	Neighborhood	Multifamily
Repeat Offender Properties	221	221	-	-
Short Term Rentals	112	5	106	1
Rooming and Boarding Homes	2	2	-	-
<b>Total</b>	<b>335</b>	<b>228</b>	<b>106</b>	<b>1</b>
<b>Total Percent of Citywide Complaints</b>	<b>1.0%</b>	<b>3.1%</b>	<b>0.6%</b>	<b>0.0%</b>

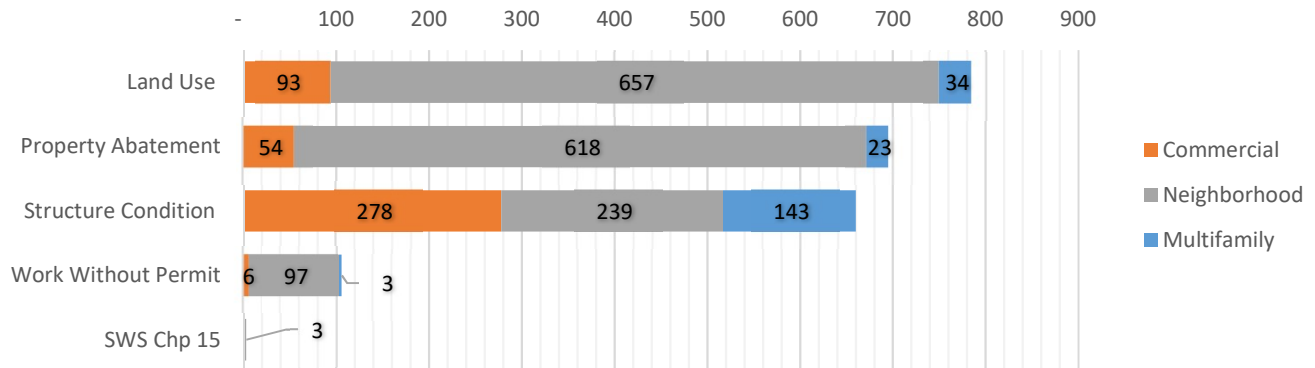
Reported Complaint Type	Total	ROP	STR	RBH
Land Use	784	3	111	2
Property Abatement	695	1	1	-
Structure Condition	660	217	-	-
Work Without Permit	106	-	-	-
SWS Chp 15	3	-	-	-
<b>Total</b>	<b>2,248</b>	<b>221</b>	<b>112</b>	<b>2</b>
<b>Total Percent of Citywide Complaints</b>	<b>7.0%</b>	<b>7.8%</b>	<b>6.7%</b>	<b>2.0%</b>

### Council District Matrix - All Cases

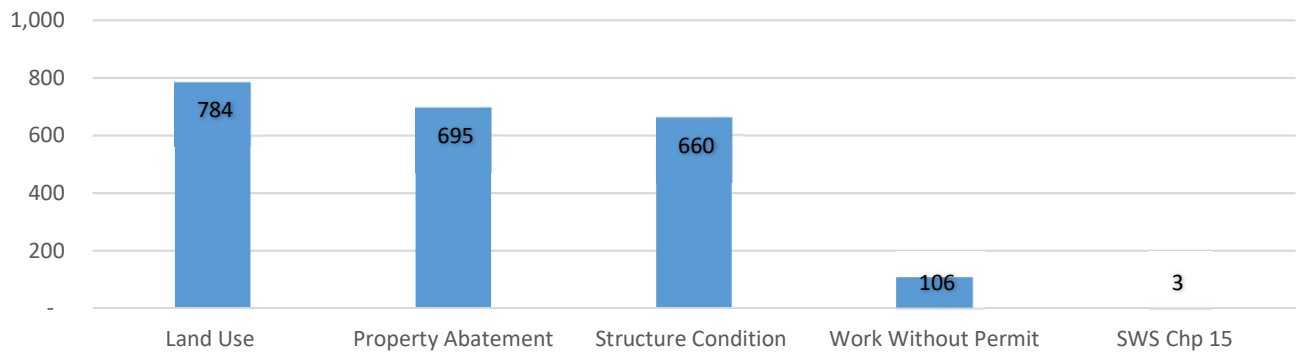
This matrix shows your Council District's percentage of total complaints in comparison with others.

Council District	% Total	% Commercial	% Neighborhood	% Multifamily
District 1	13.6%	9.2%	15.0%	14.7%
District 2	11.4%	12.6%	12.3%	7.9%
District 3	13.3%	23.4%	9.9%	11.8%
District 4	15.3%	8.4%	13.0%	28.7%
District 5	7.1%	4.2%	9.1%	4.8%
District 6	3.1%	3.1%	3.9%	1.1%
District 7	8.1%	10.0%	8.7%	4.3%
District 8	3.9%	1.8%	6.0%	0.7%
District 9	16.9%	21.4%	12.7%	23.0%
District 10	7.0%	5.9%	9.0%	2.9%

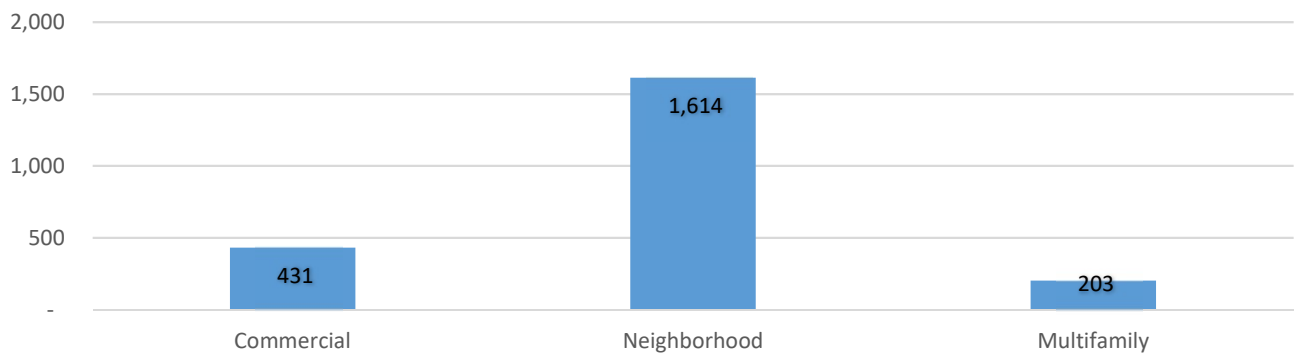
### Complaint Types by Team



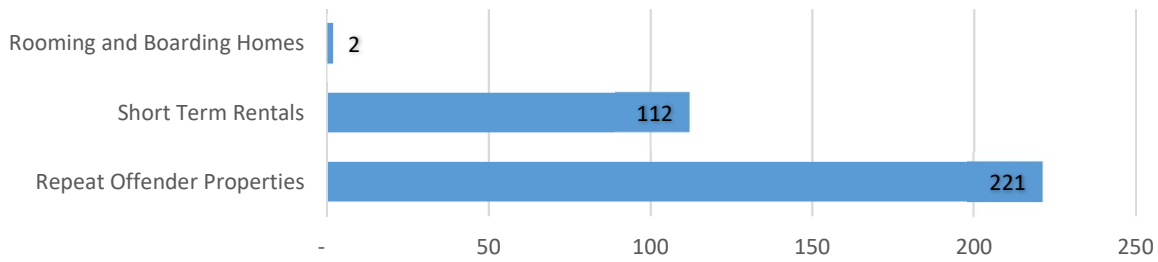
### Cases by Complaint Type



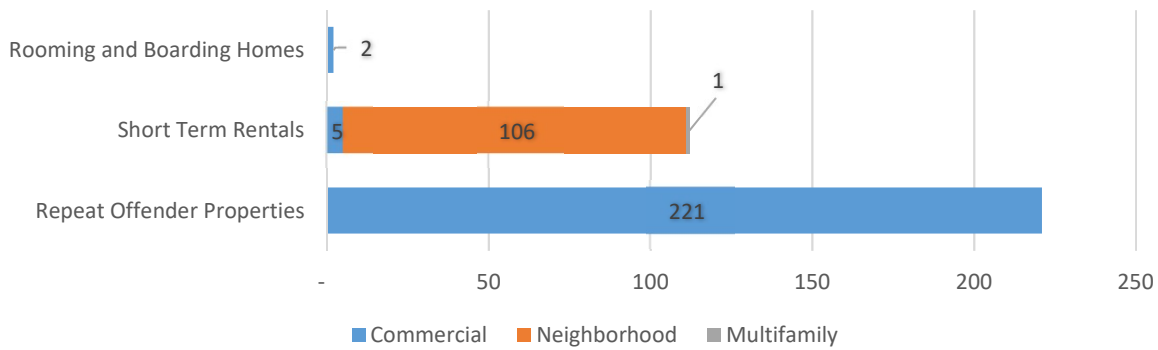
### Cases by Team



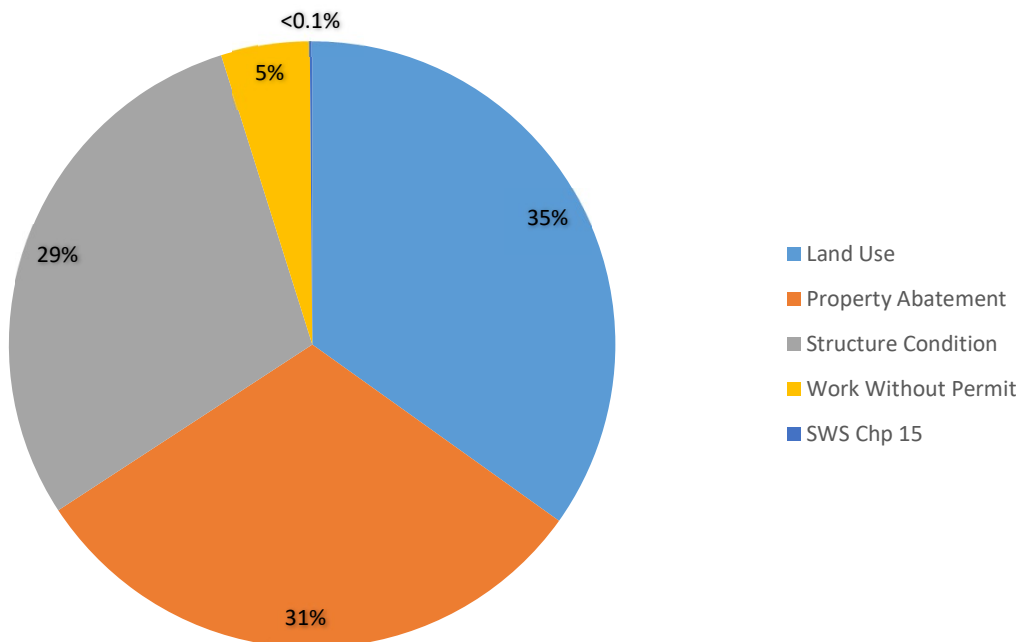
### Cases by Operating License Types



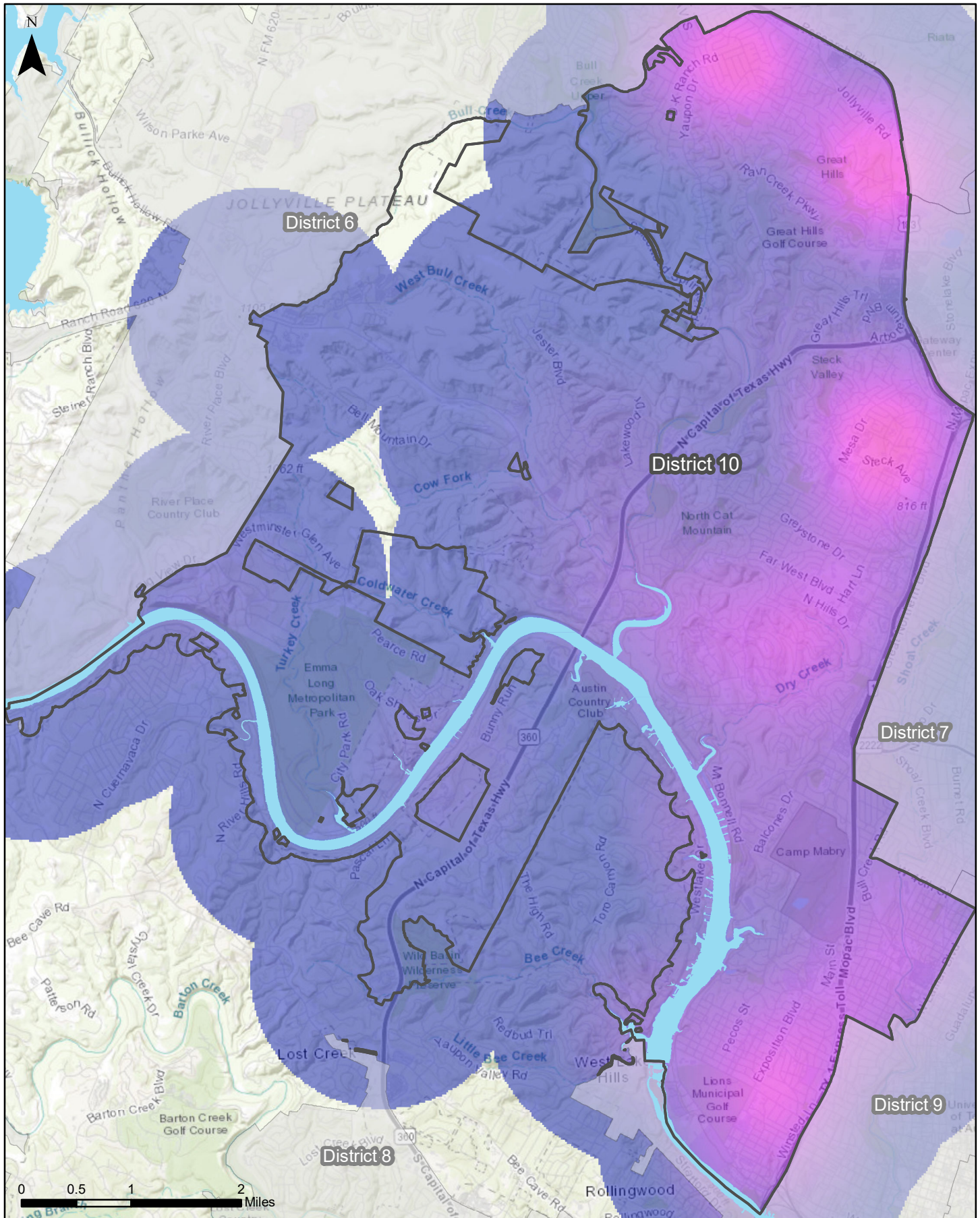
### Operating License Cases by Team



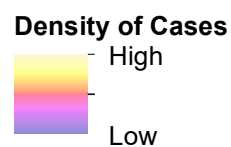
### Operating License Complaint Types



# Council District 10



This map examines the density of Code Cases opened in District 10



**AUSTIN**CODE  
DEPARTMENT

Sources: AMANDA Case Management Database; GIS DM 2018

Map generated on:  
6/24/2019